

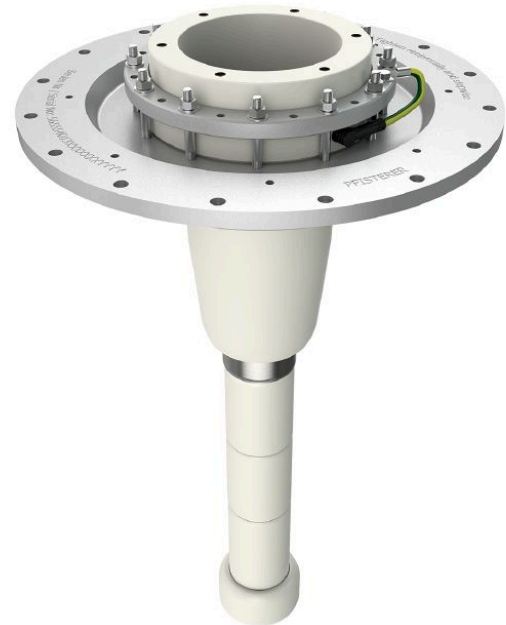
CONNEX Socket, Size 6-S, for GIS, up to 245 kV

Application:

- Socket for mounting into gas-insulated switchgears (GIS), gas-insulated transformers, joints and other gas-insulated equipment

Characteristics:

- Testing of switchgear in factory due to short time amount for plugging the accessories
- Assembly time is significantly reduced and safe assembling guaranteed
- Touch-proof, maintenance-free and floodable (IP67)



Picture may vary.

Technical Data

Article no.	828 065 999 00027	
Size	6-S	
Max. system voltage	U_m (kV)	245
Nominal voltage	U_n (kV)	220 - 230
Conductor residual voltage	U₀ (kV)	127 - 133
Applicable standards	IEC 62271-209 (Fig.3)	
Fitting length	(mm)	960
Pitch circle diameter	(mm)	582
Diameter of flange opening	(mm)	480
Capacitive voltage tap	with	
Working place	outdoor, indoor and offshore	
Insulation medium	gas	
Routine test: AC withstand voltage 1 min.	(kV)	460
Routine test: Partial discharge test < 2 pC at	(kV)	320
Rated lightning impulse withstand voltage BIL	(kV)	1050
Nominal current	I_N (A)	2500
Max. dynamic short circuit current	(kA)	160