

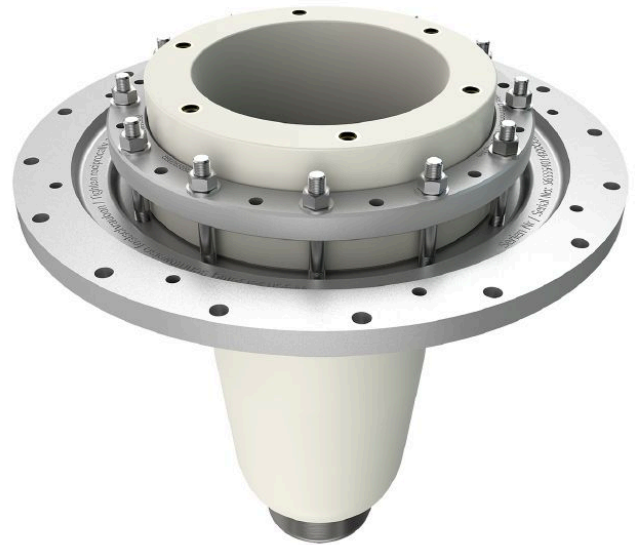
## CONNEX Socket, Size 6-S, for GIS, up to 245 kV

### Application:

- Socket for mounting into gas-insulated switchgears (GIS), gas-insulated transformers, joints and other gas-insulated equipment

### Characteristics:

- Compact design of socket allows very small cable boxes and reduction of insulation gas
- Testing of switchgear in factory due to short time amount for plugging the accessories
- Assembly time is significantly reduced and safe assembling guaranteed
- Touch-proof, maintenance-free and floodable (IP67)



Picture may vary.

## Technical Data

<b>Article no.</b>		<b>828 065 999 00032</b>
<b>Size</b>		<b>6-S</b>
<b>Max. system voltage</b>	<b>U<sub>m</sub> (kV)</b>	<b>245</b>
<b>Nominal voltage</b>	<b>U<sub>n</sub> (kV)</b>	<b>220 - 230</b>
<b>Conductor residual voltage</b>	<b>U<sub>0</sub> (kV)</b>	<b>127 - 133</b>
<b>Applicable standards</b>		<b>Compact design</b>
<b>Fitting length</b>	<b>(mm)</b>	<b>410</b>
<b>Pitch circle diameter</b>	<b>(mm)</b>	<b>320</b>
<b>Diameter of flange opening</b>	<b>(mm)</b>	<b>255</b>
<b>Capacitive voltage tap</b>		<b>without</b>
<b>Working place</b>		<b>outdoor, indoor and offshore</b>
<b>Insulation medium</b>		<b>gas</b>
<b>Routine test: AC withstand voltage 1 min.</b>	<b>(kV)</b>	<b>460</b>
<b>Routine test: Partial discharge test &lt; 2 pC at</b>	<b>(kV)</b>	<b>320</b>
<b>Rated lightning impulse withstand voltage BIL</b>	<b>(kV)</b>	<b>1050</b>
<b>Nominal current</b>	<b>I<sub>N</sub> (A)</b>	<b>2500</b>
<b>Max. dynamic short circuit current</b>	<b>(kA)</b>	<b>160</b>