

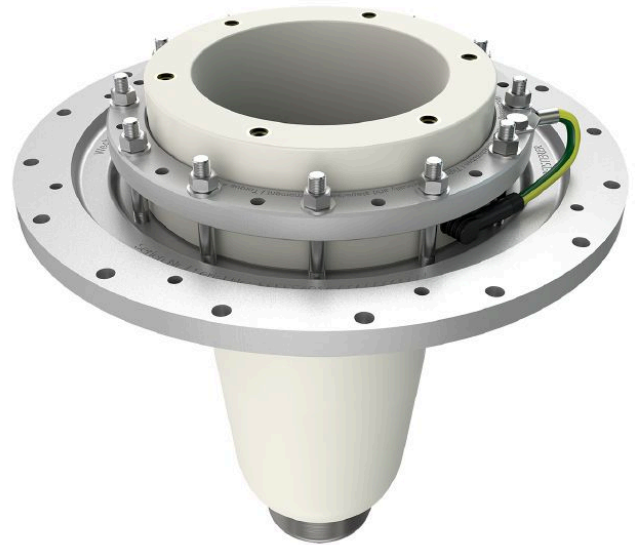
## CONNEX Socket, Size 6-S, for GIS, up to 245 kV

### Application:

- Socket for mounting into gas-insulated switchgears (GIS), gas-insulated transformers, joints and other gas-insulated equipment

### Characteristics:

- Compact design of socket allows very small cable boxes and reduction of insulation gas
- Testing of switchgear in factory due to short time amount for plugging the accessories
- Assembly time is significantly reduced and safe assembling guaranteed
- Touch-proof, maintenance-free and floodable (IP67)



*Picture may vary.*

## Technical Data

<b>Article no.</b>	<b>828 065 999 00033</b>	
<b>Size</b>	6-S	
<b>Max. system voltage</b>	$U_m$ (kV)	245
<b>Nominal voltage</b>	$U_n$ (kV)	220 - 230
<b>Conductor residual voltage</b>	$U_0$ (kV)	127 - 133
<b>Applicable standards</b>	Compact design	
<b>Fitting length</b>	(mm)	410
<b>Pitch circle diameter</b>	(mm)	320
<b>Diameter of flange opening</b>	(mm)	255
<b>Capacitive voltage tap</b>	with	
<b>Working place</b>	outdoor, indoor and offshore	
<b>Insulation medium</b>	gas	
<b>Routine test: AC withstand voltage 1 min.</b>	(kV)	460
<b>Routine test: Partial discharge test &lt; 2 pC at</b>	(kV)	320
<b>Rated lightning impulse withstand voltage BIL</b>	(kV)	1050
<b>Nominal current</b>	$I_N$ (A)	2500
<b>Max. dynamic short circuit current</b>	(kA)	160