

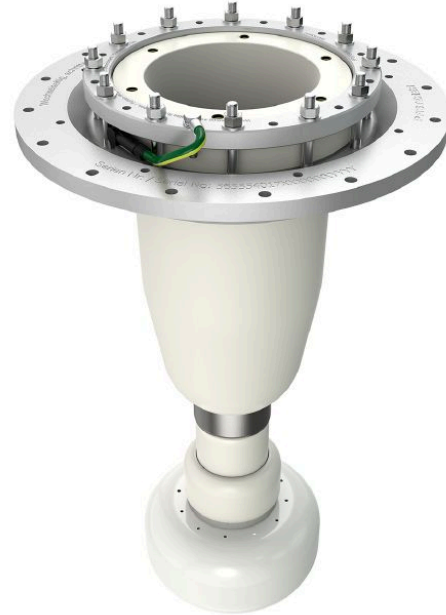
# CONNEX Socket, Size 6-S, for Transformer, up to 245 kV

**Application:**

- Socket for mounting into transformers and other oil-insulated equipment

**Characteristics:**

- Transformer testing in factory due to short time amount for plugging the accessories
- Assembly time is significantly reduced and safe assembling guaranteed
- Touch-proof, maintenance-free and floodable (IP67)



Picture may vary.

## Technical Data

<b>Article no.</b>	<b>828 066 999 00045</b>	
<b>Size</b>	<b>6-S</b>	
<b>Max. system voltage</b>	<b>U<sub>m</sub> (kV)</b>	<b>245</b>
<b>Nominal voltage</b>	<b>U<sub>n</sub> (kV)</b>	<b>220 - 230</b>
<b>Conductor residual voltage</b>	<b>U<sub>0</sub> (kV)</b>	<b>127 - 133</b>
<b>Applicable standards</b>	<b>EN 50299-2:2014</b>	
<b>Fitting length</b>	<b>(mm)</b>	<b>620</b>
<b>Pitch circle diameter</b>	<b>(mm)</b>	<b>475</b>
<b>Capacitive voltage tap</b>	<b>with</b>	
<b>Ventilation valve</b>	<b>without</b>	
<b>Working place</b>	<b>outdoor, indoor and offshore</b>	
<b>Insulation medium</b>	<b>mineral oil or ester</b>	
<b>Routine test: AC withstand voltage 1 min.</b>	<b>(kV)</b>	<b>505</b>
<b>Routine test: Partial discharge test &lt; 2 pC at</b>	<b>(kV)</b>	<b>460</b>
<b>Rated lightning impulse withstand voltage BIL</b>	<b>(kV)</b>	<b>1050</b>
<b>Nominal current</b>	<b>I<sub>N</sub> (A)</b>	<b>2500</b>
<b>Max. dynamic short circuit current</b>	<b>(kA)</b>	<b>160</b>