

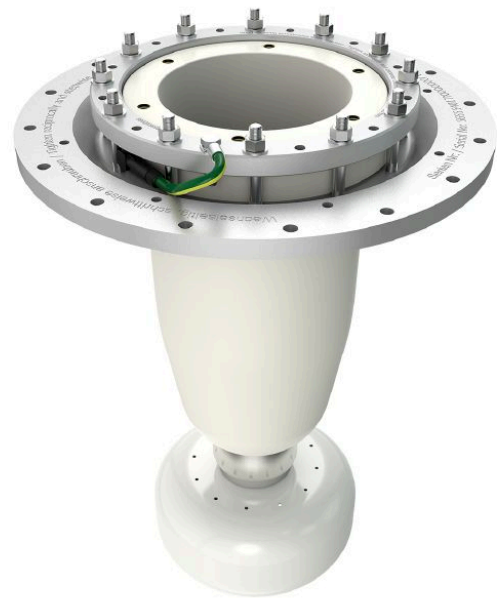
CONNEX Socket, Size 6-S, for Transformer, up to 245 kV

Application:

- Socket for mounting into transformers and other oil-insulated equipment

Characteristics:

- Compact design of the socket allows very small cable boxes and reduction of insulation oil
- Transformer testing in factory due to short time amount for plugging the accessories
- Assembly time is significantly reduced and safe assembling guaranteed
- Touch-proof, maintenance-free and floodable (IP67)



Picture may vary.

Technical Data

| | | |
|--|-------------------------------------|------------------|
| Article no. | 828 066 999 00053 | |
| Size | 6-S | |
| Max. system voltage | U_m (kV) | 245 |
| Nominal voltage | U_n (kV) | 220 - 230 |
| Conductor residual voltage | U₀ (kV) | 127 - 133 |
| Applicable standards | Compact design | |
| Fitting length | (mm) | 470 |
| Pitch circle diameter | (mm) | 475 |
| Capacitive voltage tap | with | |
| Ventilation valve | without | |
| Working place | outdoor, indoor and offshore | |
| Insulation medium | mineral oil or ester | |
| Routine test: AC withstand voltage 1 min. | (kV) | 505 |
| Routine test: Partial discharge test < 2 pC at | (kV) | 460 |
| Rated lightning impulse withstand voltage BIL | (kV) | 1050 |
| Nominal current | I_N (A) | 2500 |
| Max. dynamic short circuit current | (kA) | 160 |