

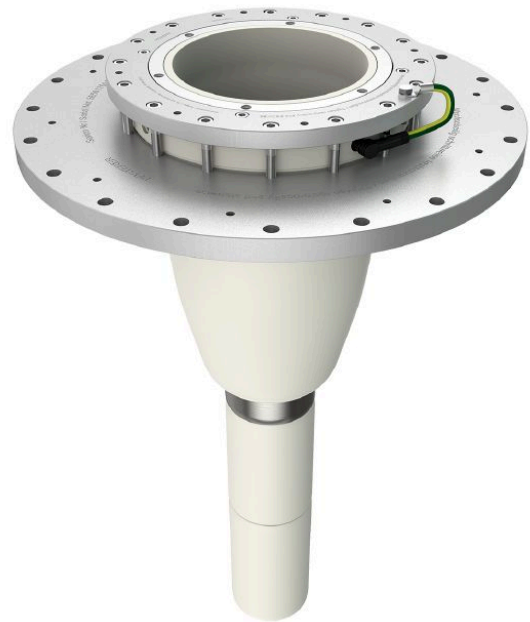
## CONNEX Socket, Size 7-S, for GIS, up to 362 kV

### Application:

- Socket for mounting into gas-insulated switchgears (GIS), gas-insulated transformers, joints and other gas-insulated equipment

### Characteristics:

- Testing of switchgear in factory due to short time amount for plugging the accessories
- Assembly time is significantly reduced and safe assembling guaranteed
- Touch-proof, maintenance-free and floodable (IP67)



Picture may vary.

## Technical Data

<b>Article no.</b>	<b>828 070 999 00005</b>	
<b>Size</b>	<b>7-S</b>	
<b>Max. system voltage</b>	<b>U<sub>m</sub> (kV)</b>	<b>362</b>
<b>Nominal voltage</b>	<b>U<sub>n</sub> (kV)</b>	<b>330 - 345</b>
<b>Conductor residual voltage</b>	<b>U<sub>0</sub> (kV)</b>	<b>190</b>
<b>Applicable standards</b>	<b>IEC 62271-209 (Fig.5)</b>	
<b>Fitting length</b>	<b>(mm)</b>	<b>960</b>
<b>Pitch circle diameter</b>	<b>(mm)</b>	<b>640</b>
<b>Diameter of flange opening</b>	<b>(mm)</b>	<b>540</b>
<b>Capacitive voltage tap</b>	<b>with</b>	
<b>Working place</b>	<b>outdoor, indoor and offshore</b>	
<b>Insulation medium</b>	<b>gas</b>	
<b>Routine test: AC withstand voltage 1 min.</b>	<b>(kV)</b>	<b>560</b>
<b>Routine test: Partial discharge test &lt; 2 pC at</b>	<b>(kV)</b>	<b>285</b>
<b>Rated lightning impulse withstand voltage BIL</b>	<b>(kV)</b>	<b>1175</b>
<b>Nominal current</b>	<b>I<sub>N</sub> (A)</b>	<b>4000</b>
<b>Max. dynamic short circuit current</b>	<b>(kA)</b>	<b>170</b>