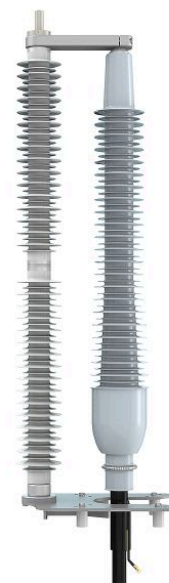


# Supported Outdoor Termination EST170-C43-SUB SA, 170 kV, dry-insulated, with surge arrester

## Cable termination and surge arrester in one

With the EST SUB SA, the surge arrester serves as a fixing point for the cable termination at the same time. No additional supporting elements are necessary. Various response voltages for the surge arrester are available.

- Quick and easy to install
- Oil- and gas-free - leak-proof
- Maintenance-free
- 100% electrically individually tested
- Proven technology



Picture may vary.

## Technical Data

Article no.	EST170-C43-SUB SA	
Max. system voltage	U <sub>m</sub> (kV)	170
Type Termination	dry-insulated, supported, for substations, with surge arrester (EST-SUB SA)	
Applicable standards	IEC 60840, IEC 60815	
Rated lightning impulse withstand voltage BIL	(kV)	750
Conductor cross section	(mm <sup>2</sup> )	240 - 2500
Diameter over cable insulation - prepared	(mm)	51.5 - 114.5
Minimum creepage distance	(mm)	4250
Min. arcing distance	(mm)	1775
Applied standard for the integrated surge arrester	IEC 60099	
Rated voltage U <sub>r</sub> of the integrated surge arrester	(kV)	144 - 228 kV available in steps of 3 kV
Nominal discharge current of the integrated surge arrester	(kA)	10 or 20
Line discharge class of the integrated surge arrester	SM or SH 3 or 4	
Max. rated short circuit current of the integrated surge arrester	(kA)	63